

# How to update VVDI2 software & firmware to V4.5.0

## (You HAVE TO update)

(2017-09-07) Attention please. **Xhorse vvd2 software** latest version V4.5.0 is released and ALL USERS ARE REQUIRED TO UPDATE VVDI2 software and firmware to version 4.5.0!!

### **TO ALL VVDI2 USERS:**

#### **Xhorse warnings:**

1. All customers should update the software to V4.5.0, use the latest software to synchronize your device  
Update firmware v4.5.0 require the latest online update tool v4.5.0 version
3. Please download latest install software first then update firmware

#### **Xhorse vvd2 4.5.0:**

<http://www.obdexpress.co.uk/wholesale/xhorse-pro-vvdi-2-ii-key-programmer.html>

#### **VVDI2 4.5.0 software download:**

<https://mega.nz/#!6xpxyTTC!-CCviRXORcrjuIy1lu4dWZUVRHXTUGil1l-9RtobbIA>

#### **VVDI2 4.5.0 update information:**

===== VAG V4.5.0 =====

1. Bugfix

===== BMW V4.5.0 =====

1. Improvement for BMW FEM/BDC key learn
2. Bugfix

===== Porsche V4.5.0 =====

1. Bugfix

===== PSA V4.5.0 =====

1. Bugfix

===== Transponder Programmer V4.5.0 =====

1. Bugfix

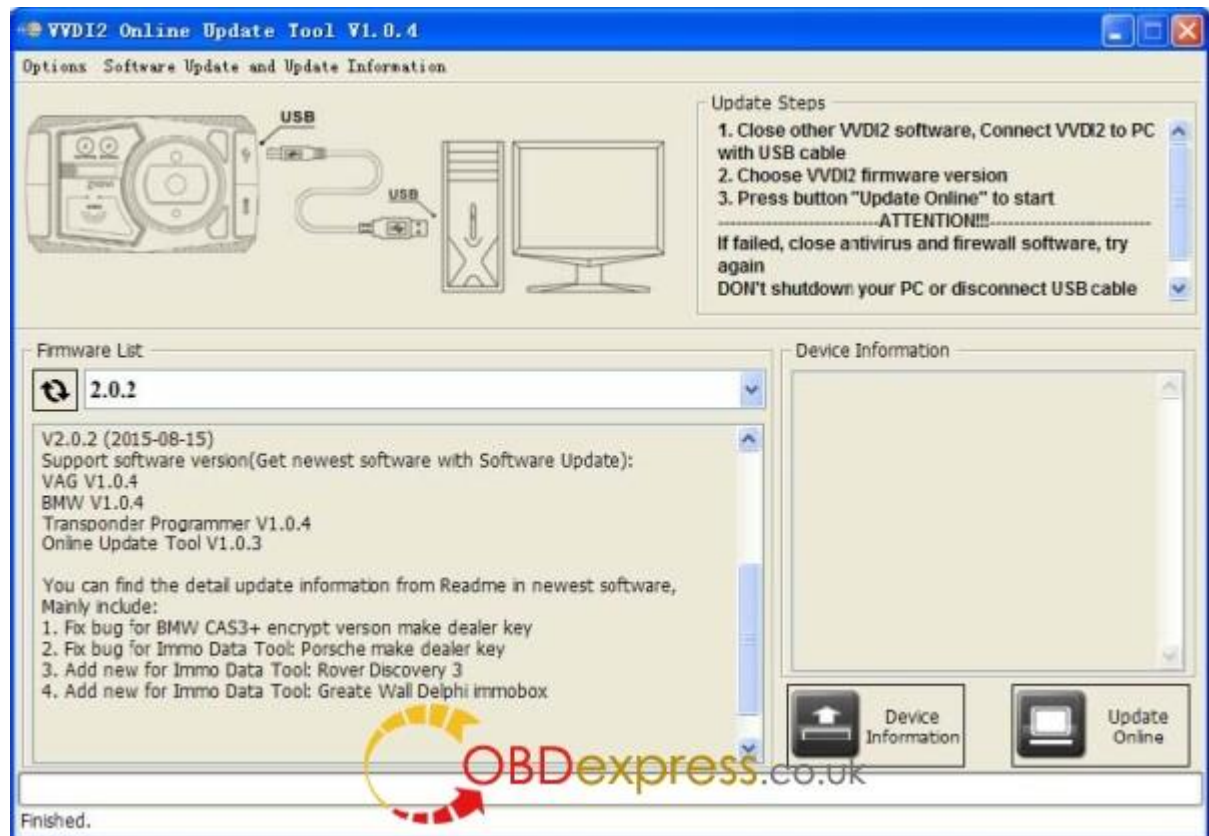
===== J2534 V4.5.0 =====

1. Bugfix

#### **How to update VVDI2 firmware to v4.5.0:**

- 1) Close other VVDI2 programs, connect VVDI2 to PC with USB cable
- 2) Choose VVDI2 firmware version from Firmware List

- 3) Press button Update Online, wait the progress end
- 4) If failed to get firmware list or get something like “communicate with server error!” while update your device, close antivirus and firewall programs, try again. Change your internet provider once failed again
- 5) DON'T shutdown your PC or disconnect USB cable while update device



### Refresh Firmware List

Update Online Tool will connect to server automatically and download the newest firmware information. You can press flash picture button if there's no display. After you get information success, will display current support firmware list, the software support by specify firmware and the mainly include update information

### Device Information

After connect VVDI2 to PC and install USB drivers, Press button Device Information, will show you VVDI2 Serial Number, current firmware version in VVDI2, authorize information etc

### Update Online

After connect VVDI2 to PC and install USB drivers, choose you expect firmware version from firmware list, Press button Update Online, wait progress finish (about 2 minutes) (Require internet)

## How to update VVDI2 software to v4.5.0:

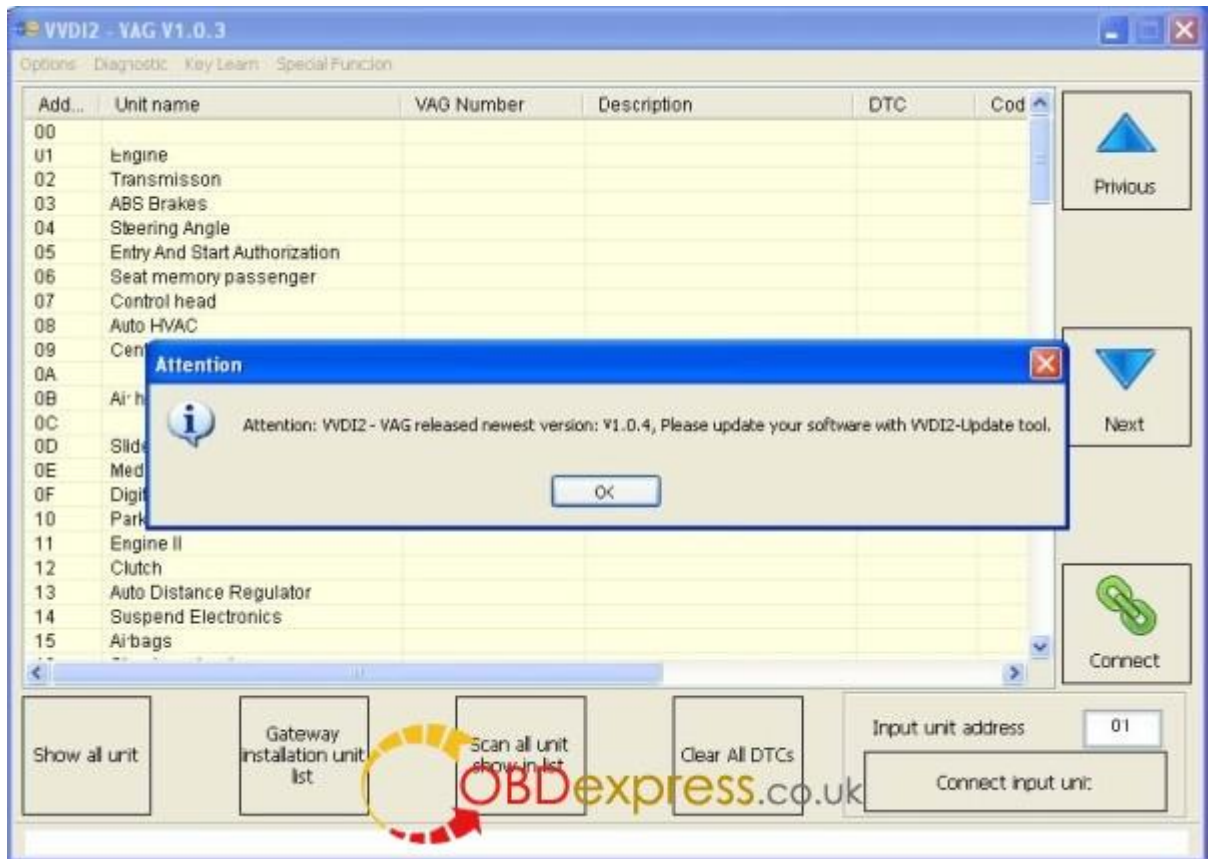
This function require internet support

Use “Menu ->Software Update ->Software Update” to obtain VVDI2 latest software version, the software version require firmware version etc (PICTURE shown as follows). Press Download Link will download the latest software

If there's no display for software version, shutdown your firewall and antivirus programs, try again



While you use VAG, BMW, Transponder Programmer programs, if you get some window like (PICTURES shown as follows), that means your tool have newest software released. Please download newest software with Update Online





### **Latest Update Information**

This function require internet support

Use “Menu->Software Update ->Latest Update Information” to obtain VVDI2 latest update information

### **History Update Information**

Use “Menu->Software Update ->History Update Information” to obtain VVDI2 history update information

### **How to install [VVDI2 4.5.0 software](#) and driver:**

#### **Step 1: Install VVDI 2 software**

Open VVDI2 software folder

Install **VVDI2-Insatller.exe** setup



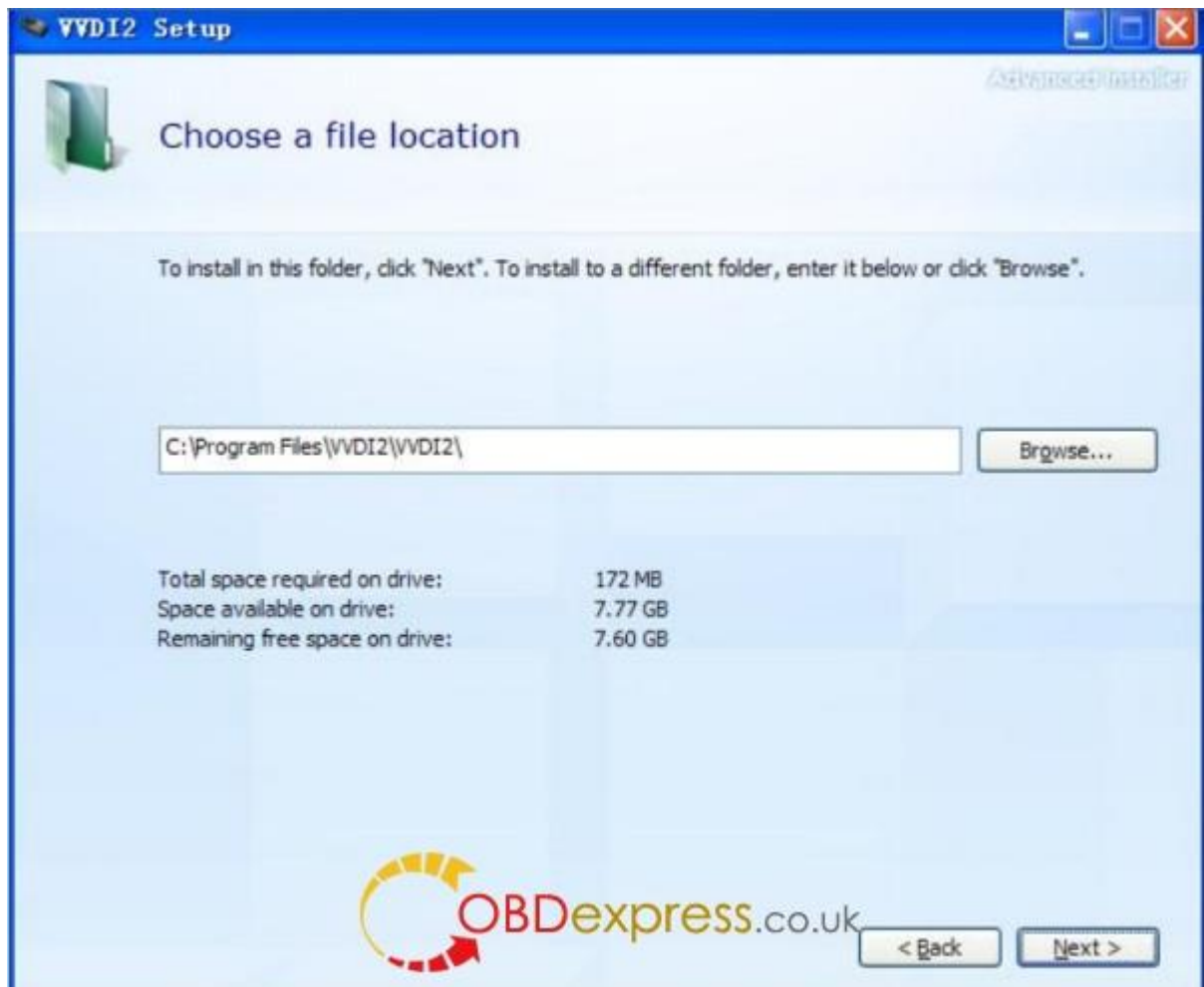
Select software language



Install VVDI2 Setup Wizard, click on "Next"



Save file to C: \Program Files \VVI2\VVDI2 \, click Next



click on "Install"





Install VVDI Device FDTI CDM Driver

NOTE: If you install VVDI2 software (any version) for the first time, you need to select "Next", otherwise, select "Cancel"



Device drivers are installed. click on **Finish**



VVDI2 software has been successfully installed. click on "Close"



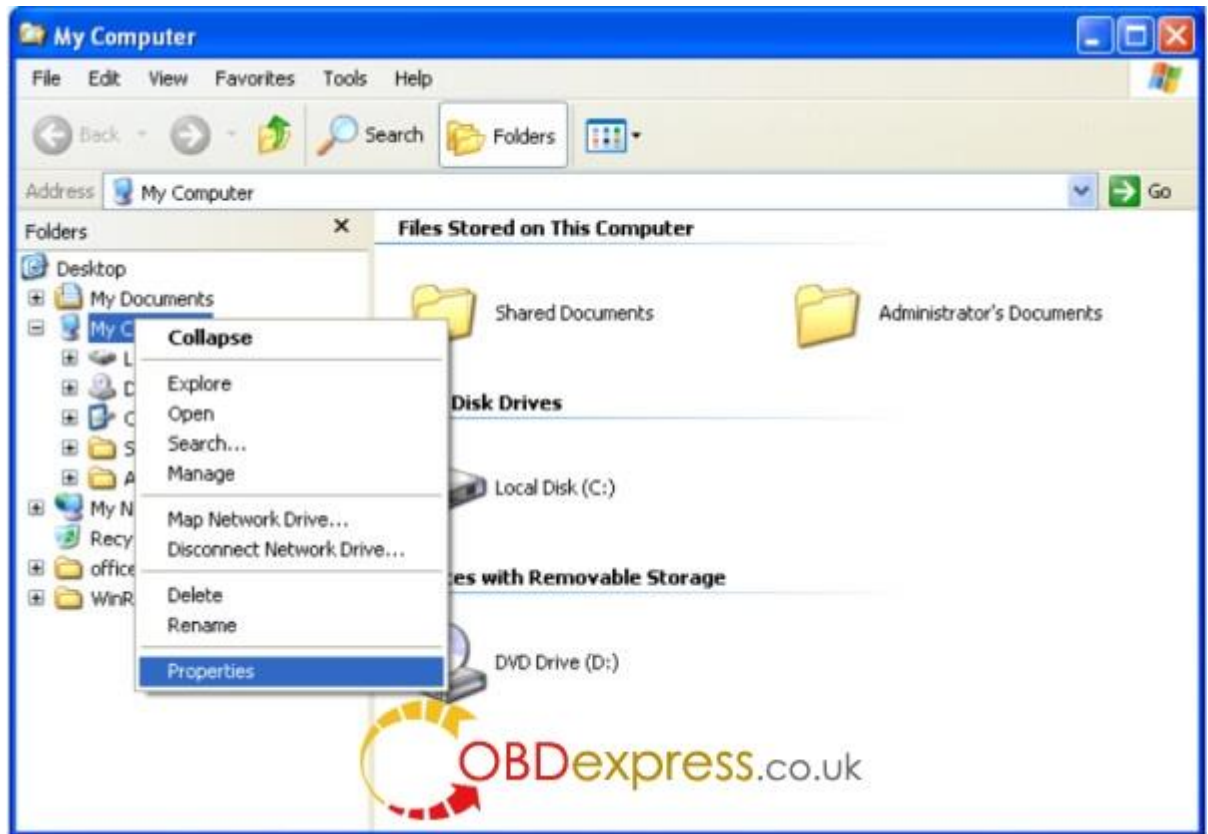
## Step 2: Install VVDI2 driver

Generally, VVDI2 driver will be installed automatically. If driver installation failed or programs cannot connect to VVDI2, you need install driver manually.

### Manual Install Driver

Open My Computer-> Manager-> Device Manager

Open windows explorer, right click on "My computer" and select "Properties"



Open "System properties"



Select "Hardware"-> "Device Manager", open Device Manager



**Install Bus driver:** Disconnect other USB cable from PC (Mouse and keyboard should keep connect)

VVDI 2 install with other version drivers: In select “**Universal Serial Bus controllers**”-> “**USB Serial Converter**”, double click on on it, get properties window: click on Driver tab.: “**Driver Date**” should be **3/18/2011**, “**Driver Version**” should be 2.08.14.0. If driver date and driver version are set right, do not install driver again. If not set correctly, install driver with following steps.

# USB Serial Converter Properties



General Advanced **Driver** Details



USB Serial Converter

Driver Provider: FTDI

Driver Date: 1/27/2014

Driver Version: 2.10.0.0

Digital Signer: Not digitally signed

Driver Details...

To view details about the driver files.

Update Driver...

To update the driver for this device.

Roll Back Driver

If the device fails after updating the driver, roll back to the previously installed driver.

Uninstall

To uninstall the driver (Advanced).



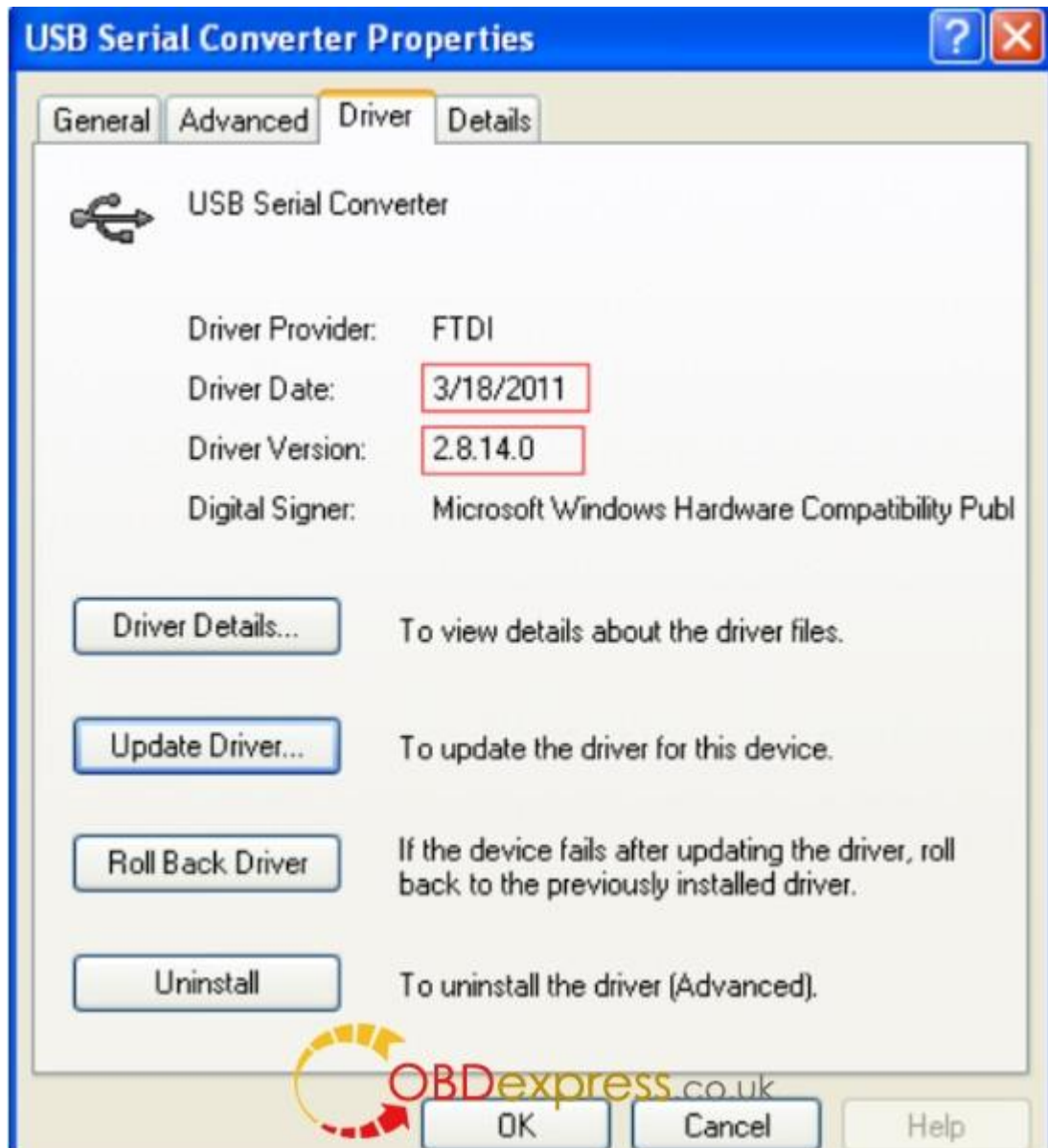
OBDexpress.co.uk

OK

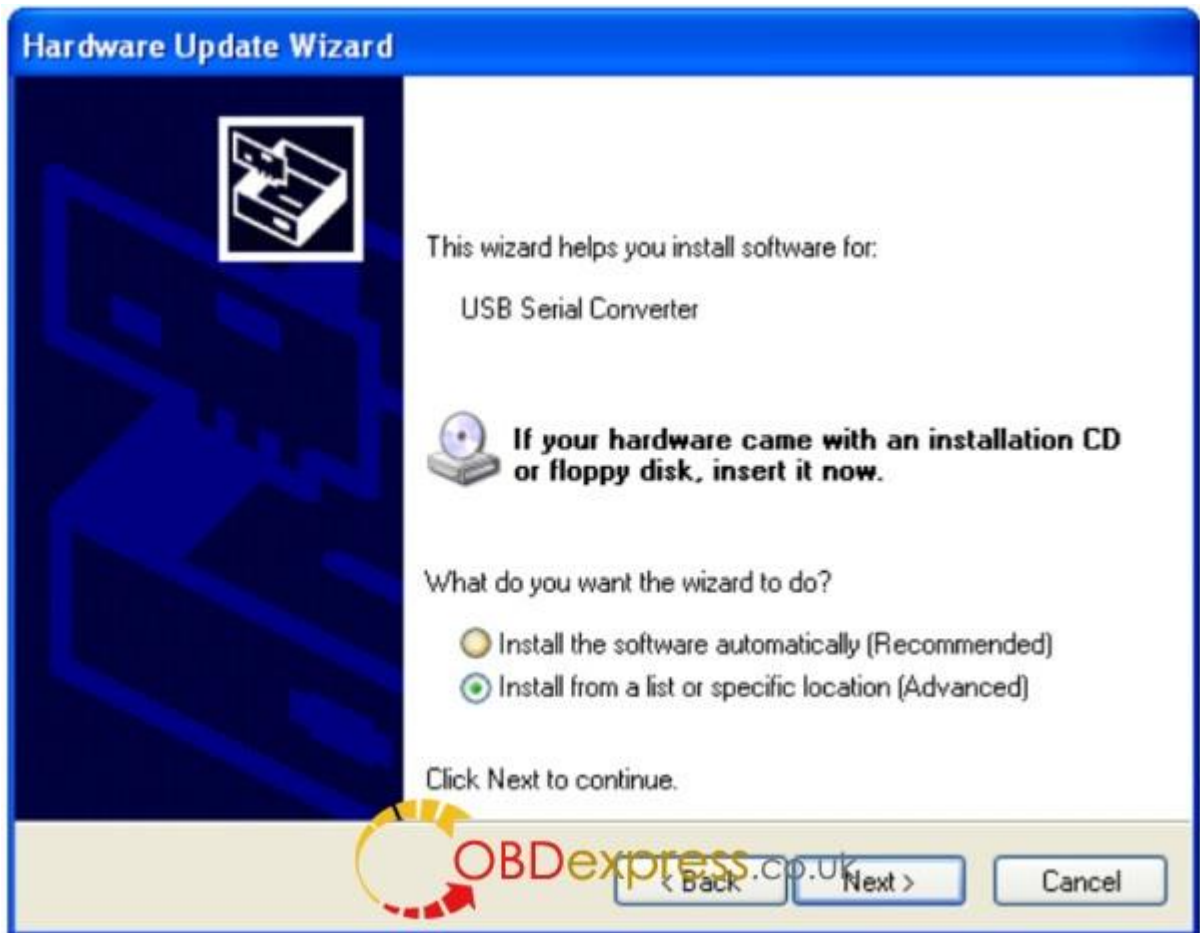
Cancel

Help

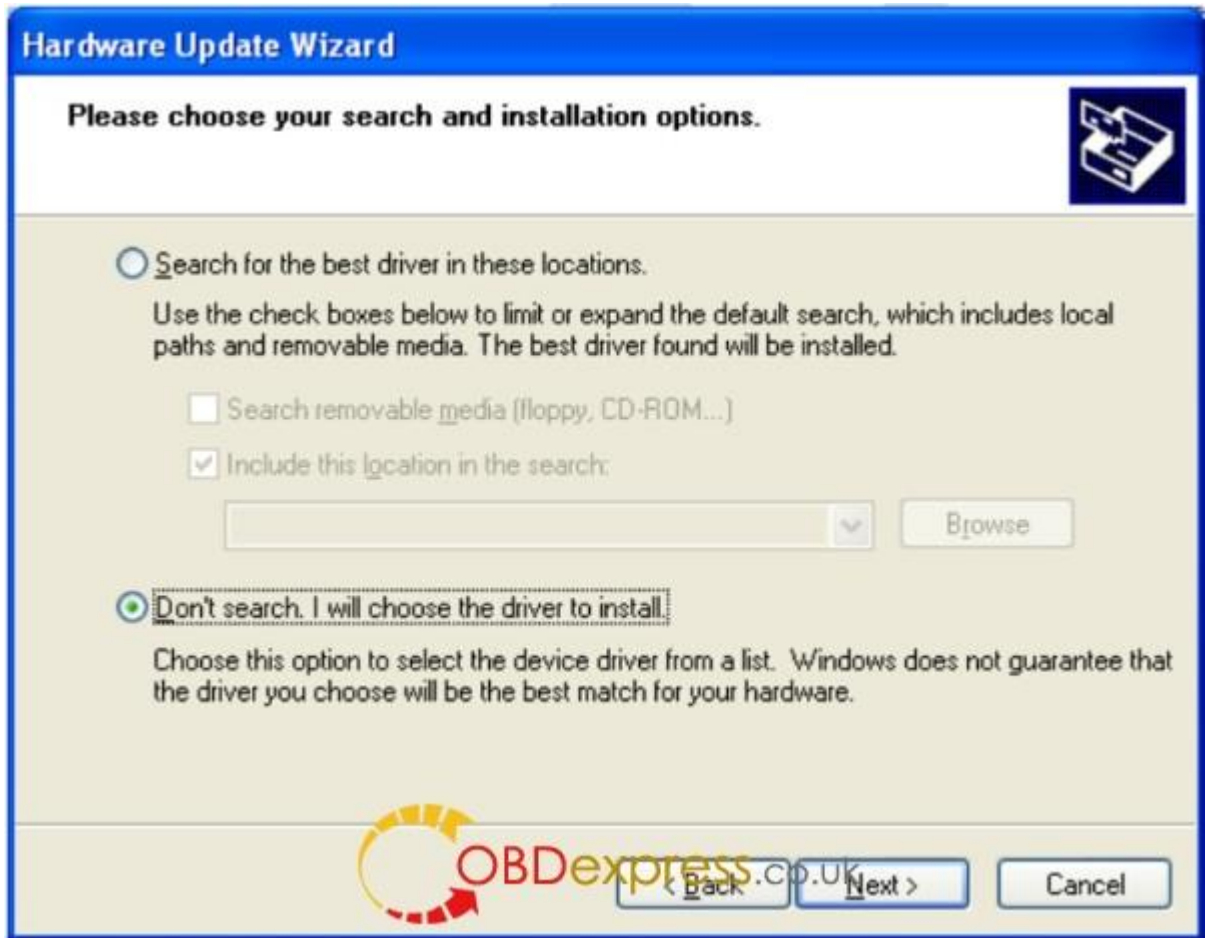




Select "Driver"-> "Update Driver". Open "**Hardware Update Wizard**"  
Select "**Install from a list or specific location (Advanced)**", click on "Next"



Select **“Don’t search. I will choose the driver to install”**. click on **“Next”** Sometimes you will get directly, at this situation, go to next 2 steps.



Select "Universal Serial Bus controllers", click on "Next"



Select "Hard Disk...", get install from disk window



Input absolute path for USB driver folder in install directory (Browse...and choose install directory, or you can find the path from **Start->Programs->VVDI2->USB Drivers**). Press OK and wait complete.

Sometimes system will ask again for “Are you sure to install this drivers?”, click on “Continue”



**VVDI2** is not recognized: you can find VVDI2 (yellow mark) in “Other devices” list from Device Manager. Double click on get properties window.

Then install driver accord VVDI2 install with other version drivers.



**Verify Bus Driver:** Open properties window after install driver. click on Driver tab.  
Check "Update Date"=3/18/2011  
"Driver Version"=2.8.14.0.

# USB Serial Converter Properties



General Advanced **Driver** Details



USB Serial Converter

Driver Provider: FTDI

Driver Date: 3/18/2011

Driver Version: 2.8.14.0

Digital Signer: Microsoft Windows Hardware Compatibility Publ

Driver Details...

To view details about the driver files.

Update Driver...

To update the driver for this device.

Roll Back Driver

If the device fails after updating the driver, roll back to the previously installed driver.

Uninstall

To uninstall the driver (Advanced).



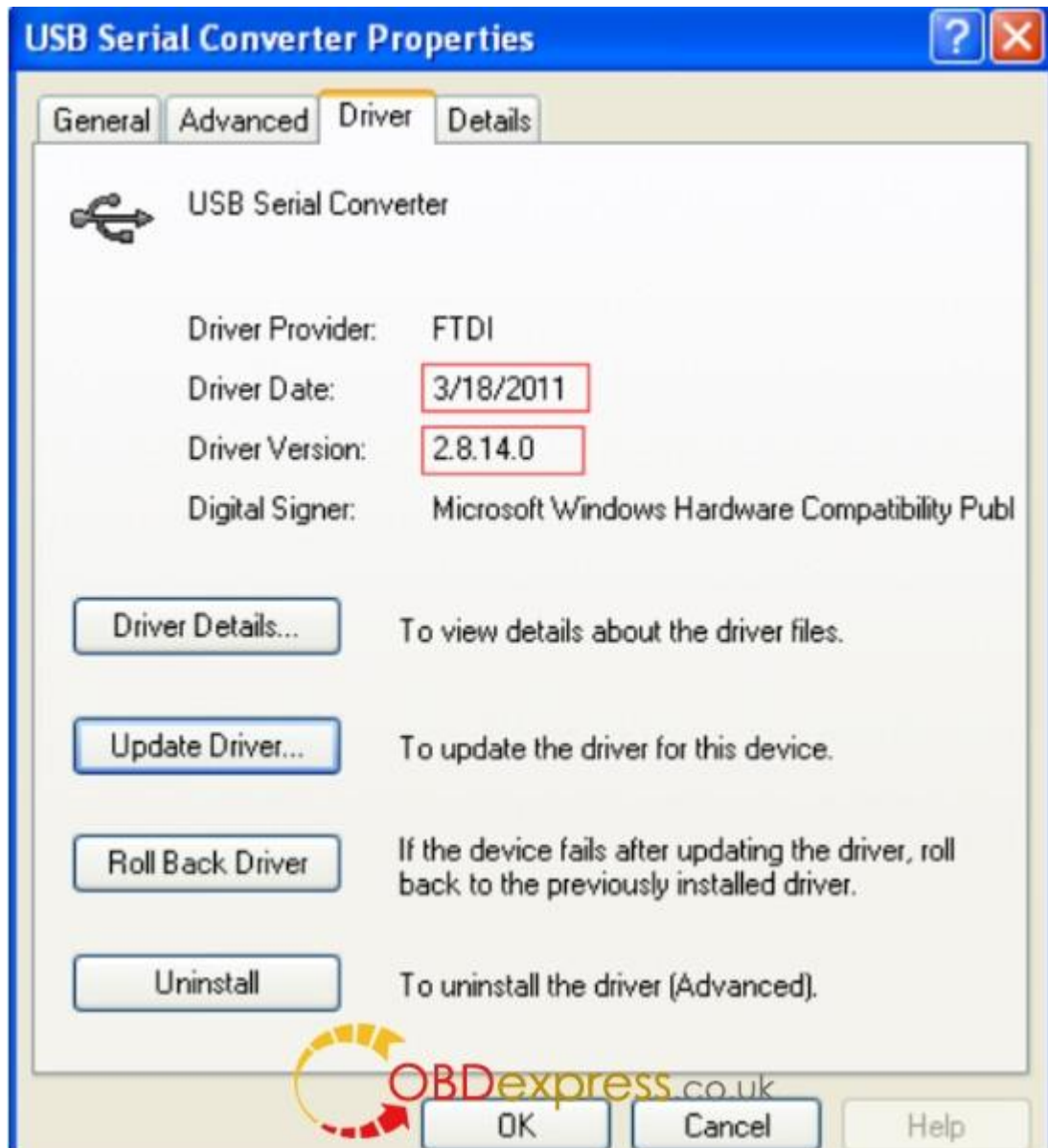
OBDexpress.co.uk

OK

Cancel

Help





VVDI2 software and drivers installation completed